

120
96
216
108

120
96
216 (108)

108
184
432
864
108
19872

140
51
140
700
7140
9872

27012 (168)

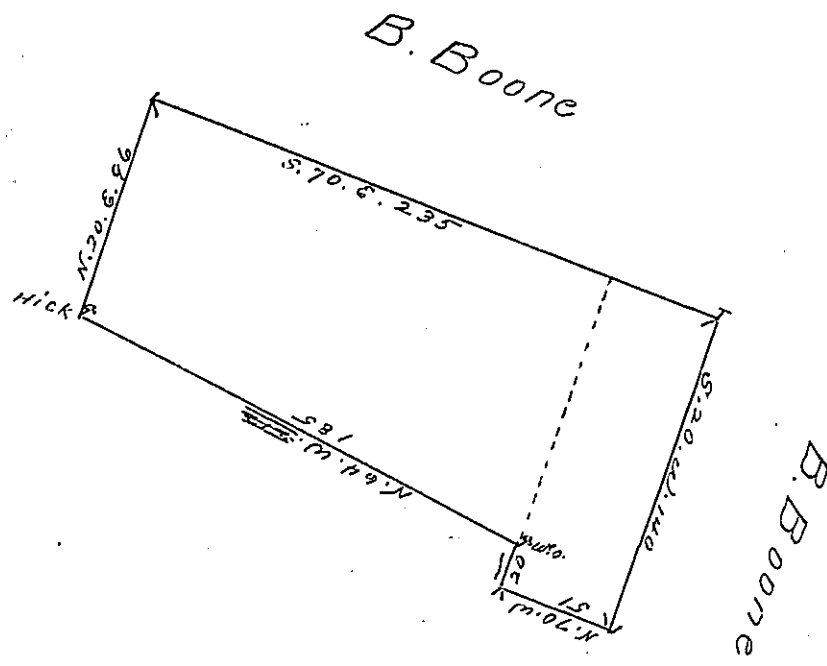
60
1101
960
1412
1280
132

16800 (158)
106
620
530
910
848
52

120
96
216 / 108

108
184
432
864
108
19872

510
140
2040
51
7140
19872
27012 / 110



By Virtue of a Warrant from the Proprietaries dated the Twenty third day of March 1734 Surveyed unto William Roberts a tract of Land situate in Chey in the County of Philad^a Beginning at a post a Corner of Benjamin Boone's land thence by the same South twenty degrees west one hundred and forty perches to a post thence by land laid off for William Morgan North Seventy degrees west fifty one perches to a post in the line of John Alpricks land thence by the same North twenty degrees east twenty perches to a white oak a Corner of said Alpricks land thence by the same North Sixty four degrees west ^{one} hundred and ⁸⁵ ~~ten~~ perches to a (o b) Key thence by land of Peter Helton N. 20. E ninety six perches to a post thence by land of Godwick Clapp South Seventy degrees east twenty one perches and the same course by land of Benjamin Boone two hundred and fourteen perches to the place of Beginning Containing ¹⁵⁸ ~~177~~ acres with ye usual allowance of Six p cent.

Surveyed April 20th. 1734.

IN TESTIMONY that the above is a copy of the original remaining on file in the Department of Internal Affairs of Pennsylvania, made conformably to an Act of Assembly approved the 16th day of February, 1833, I have hereunto set my Hand and caused the Seal of said Department to be affixed at Harrisburg,

this fifth day of November 1901

James W. Patton
Secretary of Internal Affairs.